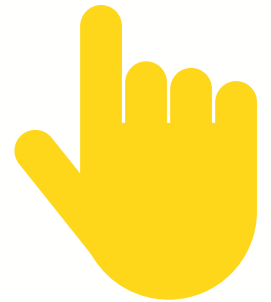




# PASO A PASO

## Hoopla y tu tarjeta Student OneCard



# NECESITARÁS:

Tu tarjeta Student OneCard

Un Chromebook, computadora o un  
smartphone



# ¿QUÉ ES LA TARJETA STUDENT ONE?



La tarjeta Student OneCard es una cuenta digital que te permite acceder a libros de la biblioteca y herramientas en línea.

# PARA INICIAR UNA SESIÓN



Necesitarás tu:

- Prefijo del Distrito Escolar
- Tu identificación de estudiante
- Tu contraseña de cuatro dígitos

Ejemplos de números de cuenta:

- SRCS123456
- RVUSD123456

Ejemplos de contraseña :

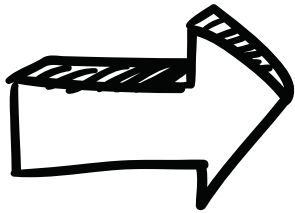
- (Año de nacimiento) 2006 o 2012
- (RVUSD MMDD) 0312 o 1211



Llama a cualquier sucursal de la Biblioteca del Condado de Sonoma para obtener ayuda con tu tarjeta Student OneCard.

# PASO 1

Encuentra el enlace de eLibrary en nuestro menú principal.



# PASO 2

H

## HelpNow by Brainfuse

Live tutors available 24 hours a day. Assistance in math, science, language arts, and other core K-12 subjects. [More](#)

## HeritageHub

U.S. obituaries and death notices for genealogical research, from 1704 to today. [More](#)

## HeritageQuest

Fully indexed and searchable, full-page online views of Census archives for the complete U.S. Federal Census, from 1790 to 1930. Thousands of family and place histories, genealogical books, documents, and official records. [More](#)

## Historical Magazine Archives from EBSCO

Full text historical runs of select major magazines dating from the 1800s forward including Architectural Digest (1922-2011), The Atlantic (1857-2014), Bloomberg Businessweek (1929-2000), Forbes (1917-2000), Fortune (1930-2000), Life (1936-2000) and U.S. News & World Report (1926-1984). [More](#)

## Hoopla Curiosity Stream BingePass

Access to award-winning films, shows, and series covering science, nature, travel, history, technology, and more. [More](#)

## Hoopla Digital

eBooks, eAudiobooks, movies, music, comics, magazines and television shows. [More](#)

## Hoopla Great Courses BingePass

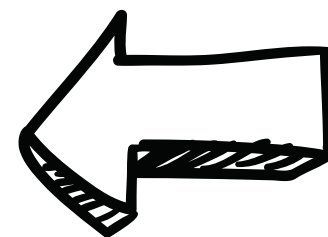
Access to hundreds of the most popular Great Courses. [More](#)

## Hoopla hellosaurus BingePass

Enjoy stories from award-winning creators, makers, and musicians for kids ages two to eight. [More](#)

## Hoopla Magazines BingePass

Current issues of 50-plus popular magazines. [More](#)



Desplázate hacia abajo. Hoopla está numerado alfabéticamente. Haz clic en Hoopla Digital.

# PASO 3

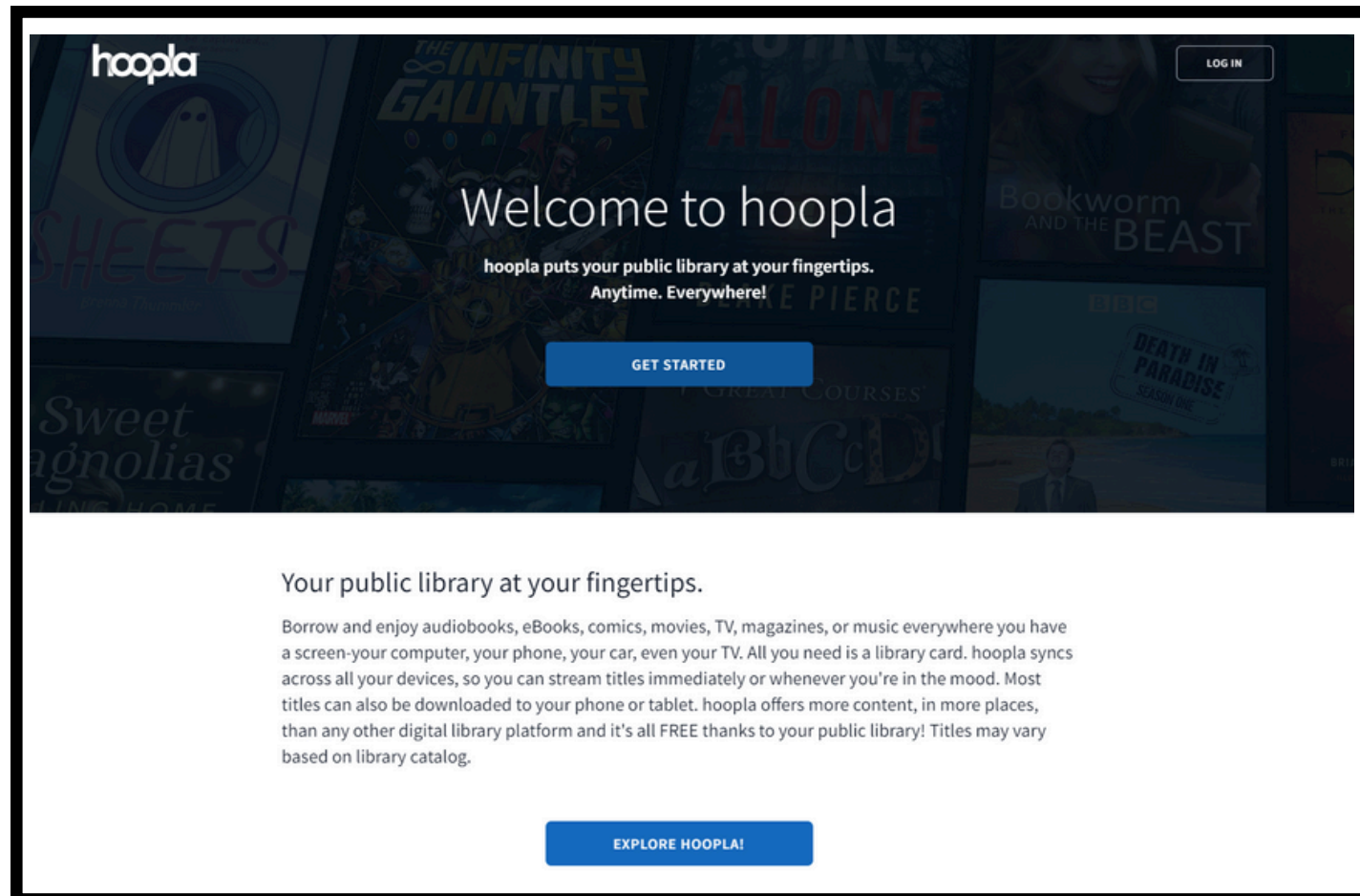
Te pedirá el número de la tarjeta de la biblioteca, Student OneCard o de tu tarjeta electrónica.



Your library card number (with no spaces) -  
El número de su carné de la biblioteca (sin  
espacios):

# PASO 4

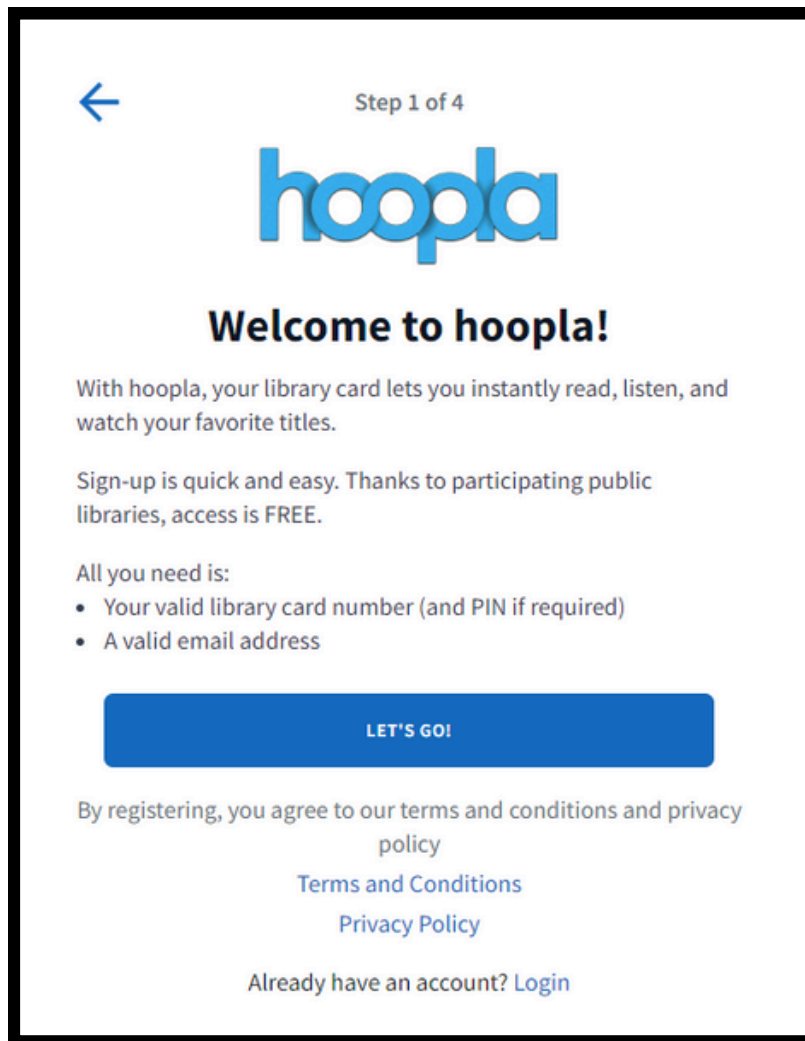
Haz clic en  
Comenzar  
para iniciar  
una sesión





# PASO 5

Necesitarás tu número de **Student OneCard** o número de tu tarjeta de la biblioteca, código de cuatro dígitos y un correo electrónico válido para crear una cuenta.



← Step 1 of 4

**hoopla**

**Welcome to hoopla!**

With hoopla, your library card lets you instantly read, listen, and watch your favorite titles.

Sign-up is quick and easy. Thanks to participating public libraries, access is FREE.

All you need is:

- Your valid library card number (and PIN if required)
- A valid email address

**LET'S GO!**

By registering, you agree to our terms and conditions and privacy policy

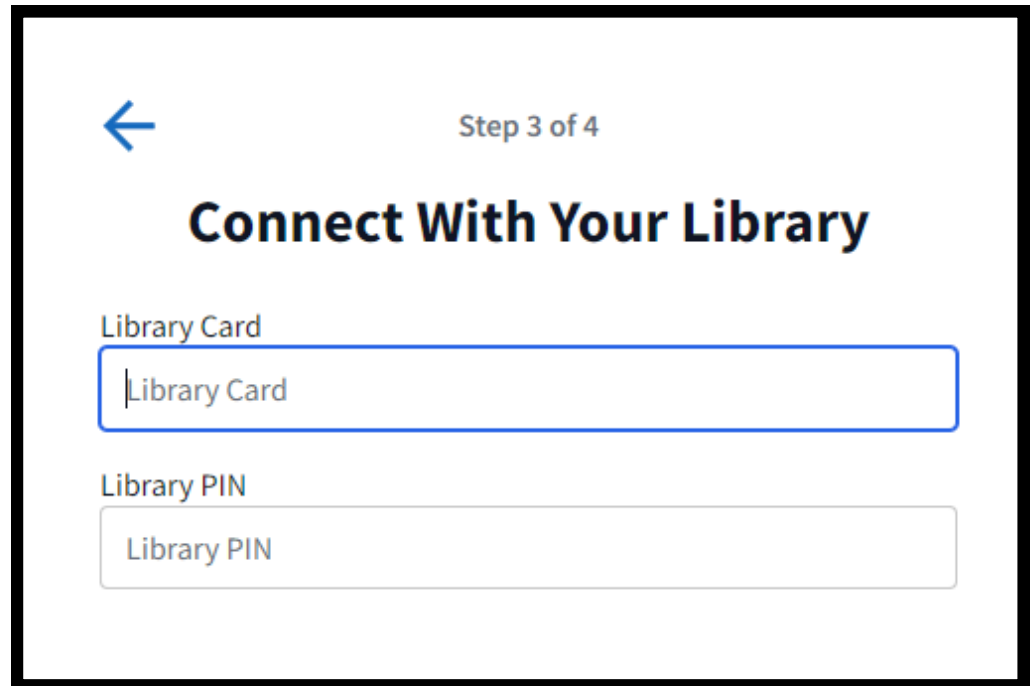
[Terms and Conditions](#)

[Privacy Policy](#)

Already have an account? [Login](#)

# PASO 6

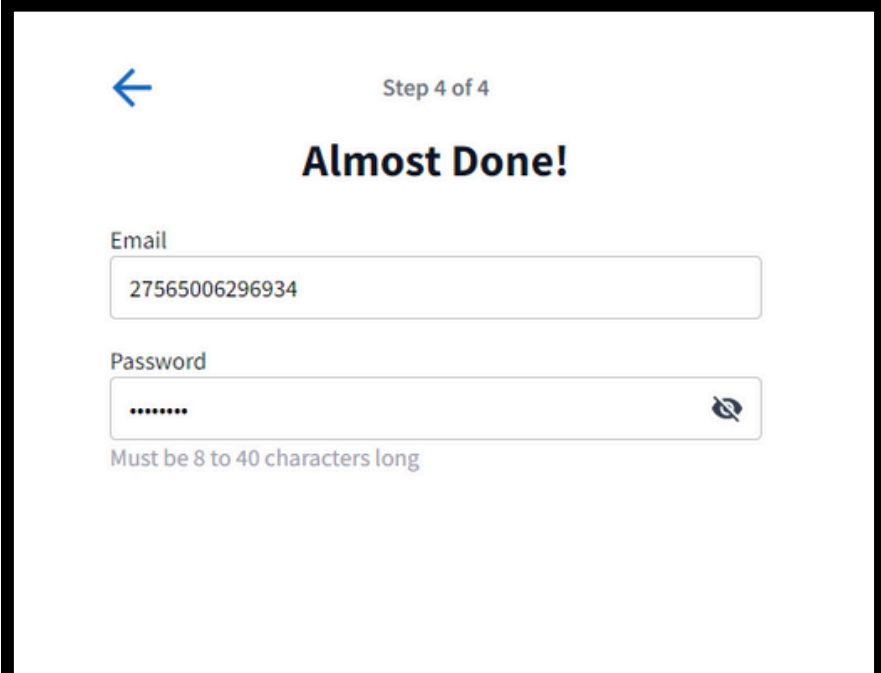
Ingresa tu número de **Student OneCard** o número de tu tarjeta de la biblioteca y tu código de cuatro números.



A screenshot of a mobile application interface. At the top left is a blue back arrow. To its right is the text "Step 3 of 4". Below this is the title "Connect With Your Library" in bold. There are two input fields: the first is labeled "Library Card" and contains the placeholder text "Library Card"; the second is labeled "Library PIN" and contains the placeholder text "Library PIN".

# PASO 7

A continuación ingresa tu correo electrónico y una contraseña.  
¡Ya estás listo para disfrutar de Hoopla!



Step 4 of 4

**Almost Done!**

Email

27565006296934

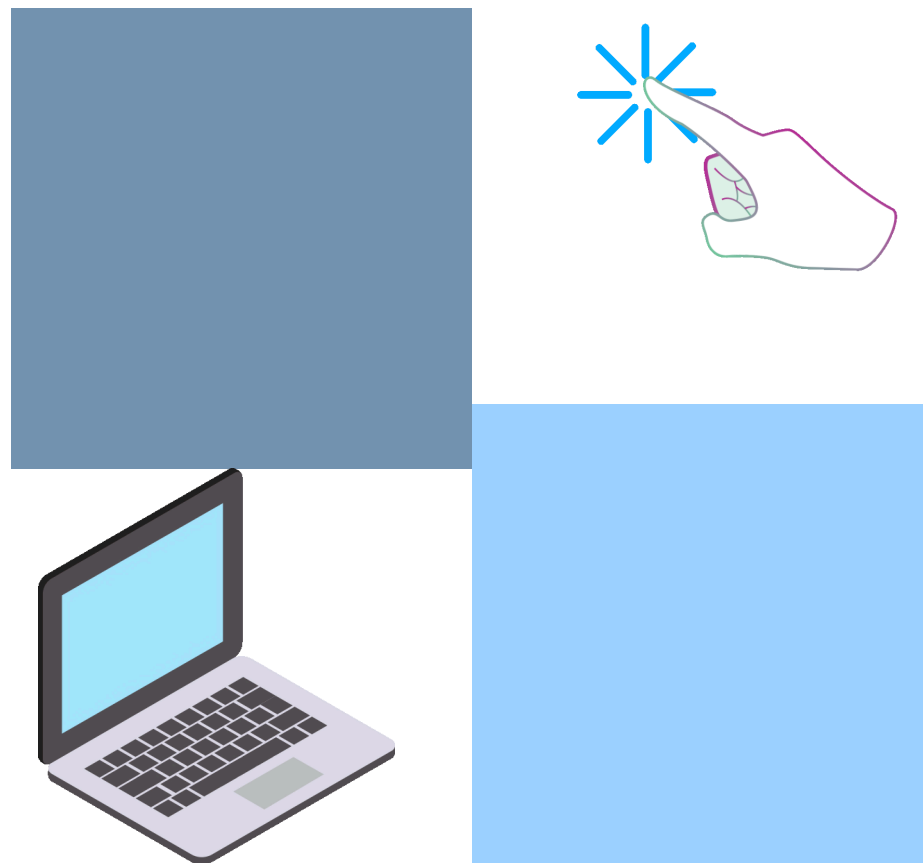
Password

.....

Must be 8 to 40 characters long

## PASO 8

¡Convierte el  
uso de  
**hoopla**<sup>®</sup>  
en un hábito!



# GRACIAS



- Bookmark
- Follow
- Subscribe
- Marque
- Siga
- Suscríbese



**You Tube** sonomalibrary

Your Library at Home | *Su Biblioteca en Casa*

SONOMA COUNTY  
  
**LIBRARY**  
BIBLIOTECA